



SMALL COMPUTERS NETWORK



LOCAL AREA NETWORKS (LAN)



WORK-STATIONS



SERVERS



EPOS (Electronic Point of Sales) SYSTEM

# Premium Pro

## 700-3000 VA single-phase



Premium Pro 700-3000 VA



**PREMIUM PRO** is the latest evolution of the successful Riello Dialog Plus online UPS. This latest development has been designed with the environment in mind and is part of the Riello ECO Line of UPS.

**PREMIUM PRO** is an on-line double-conversion UPS offering the highest levels of reliability and protection for critical servers, voice and data processing IT systems.

For long runtime applications, **PREMIUM PRO (ER models) can be fitted with matching battery extension packs which also include additional battery boost chargers.**

In terms of communications, each **PREMIUM PRO** has a built-in mimic panel with an LCD to show input and output voltages, and battery charge status. The inverter is a totally new design, fully microprocessor controlled and constructed to achieve the highest levels of operating efficiency and configuration options. **PREMIUM PRO** UPS also have USB communication ports as standard, with a built-in expansion slot for additional adapters, protocol converters and relate contact cards.

The UPS is highly efficient. **PREMIUM PRO** is designed to save energy and has a power-off push-button feature to reduce energy consumption to zero, when no load is connected or switched off.

**PREMIUM PRO** models include 700VA, 1000VA, 1500VA, 2200VA and 3000VA.

### FEATURES

- Filtered, stabilised, reliable output voltage: on-line double-conversion technology (VFI in accordance with IEC 62040-3) with built-in EMI filters
- High overload capability up to 150%
- Programmable auto-restart when mains power returns
- Programmable cold-start from battery
- Power factor correction (UPS input power factor close to 1)
- Wide input voltage tolerance (from 120-280Vac) without battery usage
- Possibility to extend autonomy for several hours
- Fully configurable using UPS Tools configuration software

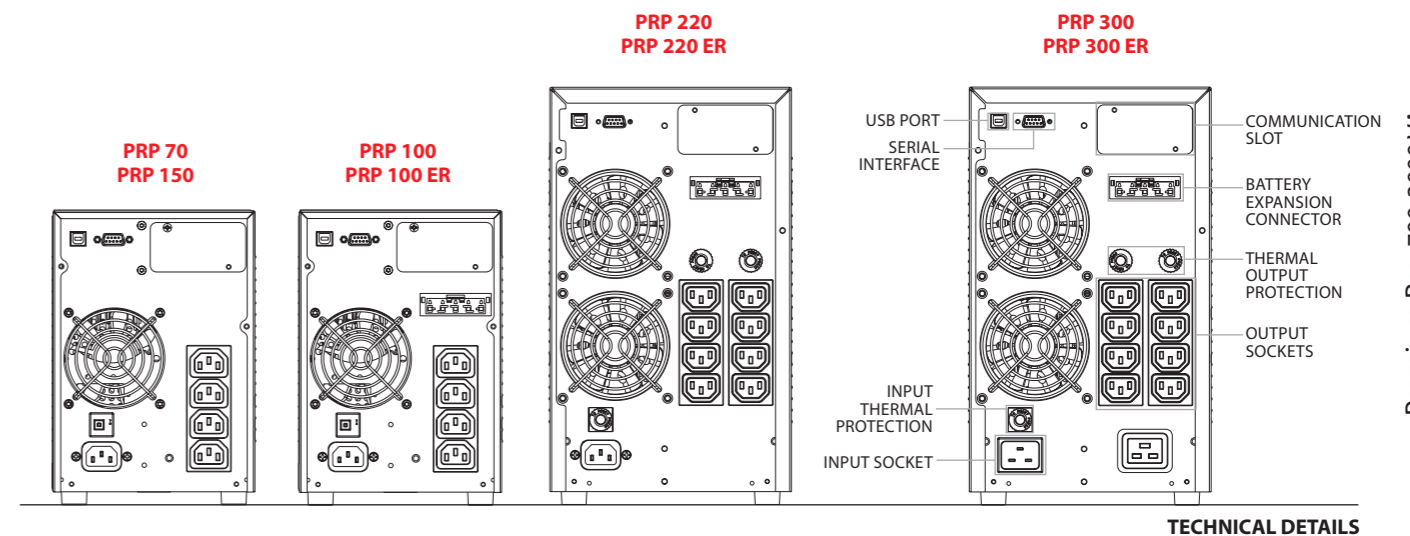
- High level of battery reliability (automatic and manually-activated battery tests)
- High level of UPS reliability (total microprocessor control)
- Low impact on the mains (sinusoidal absorption)
- Input protection with fuse which can be reset.

### ADVANCED COMMUNICATION

- Advanced communication, multiplatform, for all operating systems and network environments, Powershield<sup>3</sup> supervision and shut-down software included for Windows 7, 2008, Vista, 2003, XP, Linux, Mac OS X, Sun Solaris and VMware ESX operating systems and other Unix operating systems
- UPS Tools configuration and personalisation software supplied as standard
- RS232 serial port and opto-isolated contacts
- USB port
- Slot for communication cards.

### 2 YEAR WARRANTY

Display detail

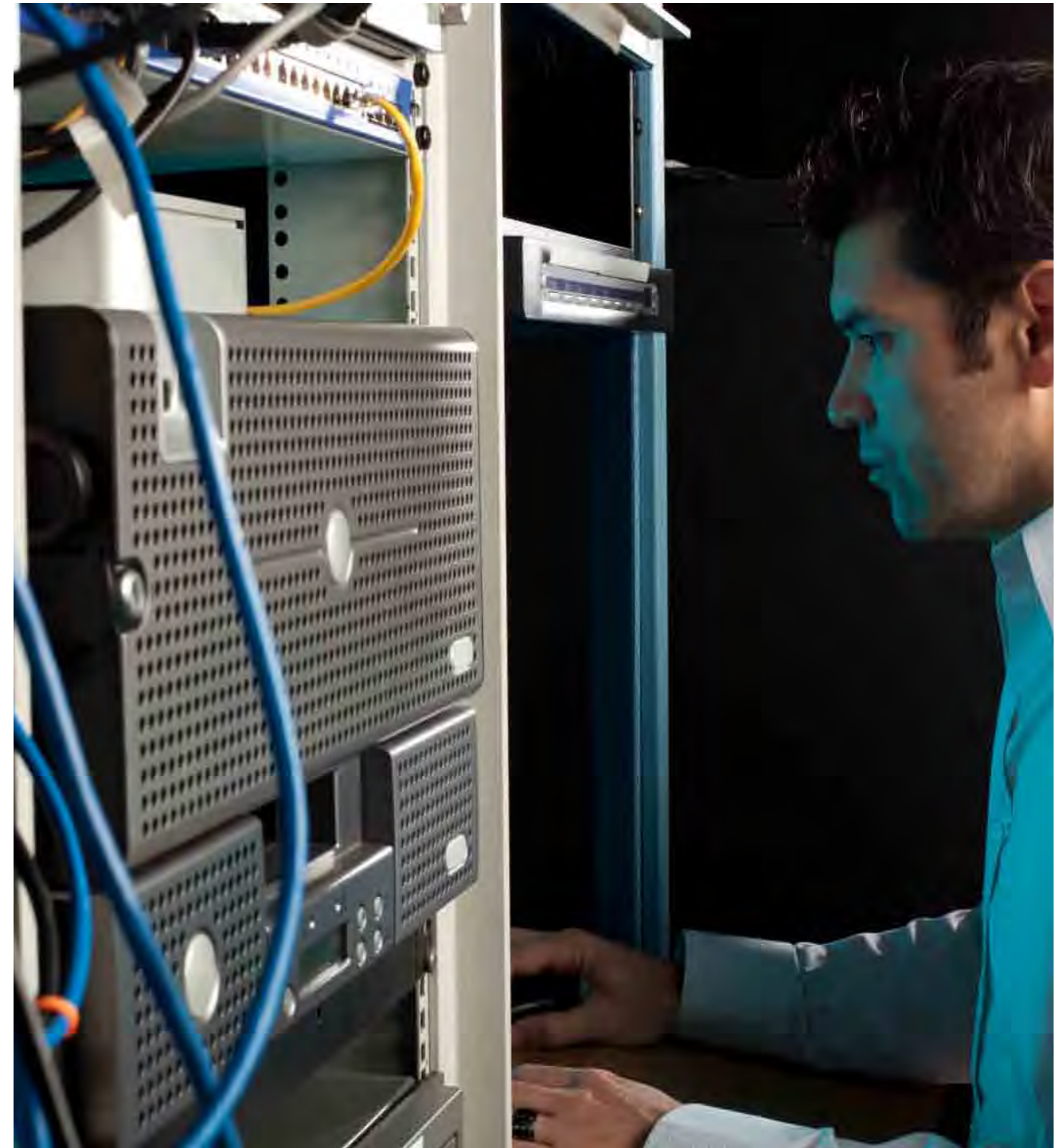


TECHNICAL DETAILS



Premium Pro 700-3000 VA

MODELS	PRP 70	PRP 100	PRP 100 ER	PRP 150	PRP 220	PRP 220 ER	PRP 300	PRP 300 ER
POWER	700VA/560W	1000VA/800W		1500VA/1200W	2200VA/1760W		3000VA/2400W	
<b>INPUT</b>								
Nominal voltage	220-230-240 Vac							
Voltage range for no battery intervention	140 Vac < Vin < 276 Vac @50% LOAD / 184 Vac < Vin < 276 Vac @ 100% LOAD							
Maximum permitted voltage	300 Vac							
Nominal frequency	50/60 Hz							
Frequency range	50 Hz $\pm$ 5% / 60 Hz $\pm$ 5%							
Power factor	> 0.99							
Current distortion	$\leq$ 7%							
<b>BY PASS</b>								
Voltage tolerance	180 - 264 Vac							
Frequency tolerance	Frequency selected (from $\pm$ 0.Hz to $\pm$ 5Hz configurable)							
<b>OUTPUT</b>								
Voltage distortion with linear load/with distorting load	< 2% / < 4%							
Frequency	Can be selected: 50 Hz or 60 Hz or self-learning							
Static variation	$\pm$ 1%							
Dynamic variation	$\leq$ 5% in 20 msec.							
Waveform	Sinewave							
Current crest factor	3 : 1							
On Line / ECO Mode and Smart Active efficiency	98%							
<b>BATTERIES</b>								
Type	VRLA AGM lead, maintenance-free							
Charging time	2-4 hours	N.A.		2-4 hours	N.A.		2-4 hours	N.A.
<b>OVERLOAD TIMES</b>								
100% < Load < 110%	2 minutes							
110% < Load < 150%	5 seconds							
Load > 150%	1 second							
<b>ENVIRONMENTAL</b>								
Net weight (kg)	10,9	13,3	7	14,8	25,6	10,6	28	14
Gross weight (kg)	12,5	14,9	8,6	16,4	28,8	13,8	31,2	17,2
Dimensions (hwd) (mm)	158 x 422 x 235				190 x 446 x 333			
Packaging dimensions (hwd) (mm)	245 x 500 x 340				325 x 585 x 470			
Protection against overvoltages	300 joules							
Protection devices	Overcurrent - short circuit - overvoltage - undervoltage - circuit breaker - excessively low battery							
Communication	USB / DB9 with RS232 and contacts / Slot for communication interface							
Standards	Safety: EN 62040-1 and Directive 2006/95/EC; EMC: EN 620040-2 category C2 and Directive 2004/108/EC							
Ambient temperature	0°C / +40°C							
Relative humidity	< 95% not condensed							
Colour	Black							
Noise level	< 40 dBA @ 1 m							
Standard equipment	Power cable, serial cable, USB cable, safety manual, quick start, software on CD-ROM							



BATTERY BOX MODELS	BB 36-A3 / BB 36-M1	BB 72-A3 / BB 72-M1
PRP MODELS	PRP 100	PRP 220-300/ER
Dimensions (mm) h x w x d		